

Say hello 🖐️ to

Mila



Welcome to Mila! This manual provides specific operating instructions for your model. Use the unit only as instructed in this user manual. These instructions are not meant to cover every possible condition and situation that may occur. Please practice caution and common sense when installing, operating, and maintaining any unit.

**USA & CANADA:** This unit has a polarized plug (one blade is wider than the other). To reduce the risk of electric shock, this plug is intended to fit in a polarized outlet only one way. If the plug does not fit fully in the outlet, reverse the plug. If it still does not fit, contact a qualified electrician. Do not attempt to defeat this safety feature.

**WARNING!** Avoid fire hazard or electric shock. Do not use an extension cord or an adaptor plug. Do not remove any prong from the power cord.

This unit can be used in 50Hz or 60Hz power supply without any change.

Do not store or use gasoline or other flammable vapors and liquids in the vicinity of this or any other unit. Read product labels for flammability and other warnings.

Do not let water or any other liquid or flammable detergent enter the unit to avoid electric shock and/or a fire hazard.

Do not disassemble the product.

Do not touch the fan blade when removing the filter.

If the supply cord is damaged, it must be replaced by the manufacturer, its service agent or similarly qualified persons in order to avoid a hazard.

**CHILDREN AND VULNERABLE PEOPLE SAFETY WARNING!** Risk of suffocation, injury or permanent disability.

This unit is not intended for use by persons (including children) with reduced physical, sensory or mental capabilities, or lack of experience and knowledge, unless they have been given supervision or instruction concerning use of the unit by a person responsible for their safety. Children should be supervised to ensure that they do not play with the unit.

This unit can be used by children aged from 8 years and above and persons with reduced physical, sensory or mental capabilities or lack of experience and knowledge if they have been given supervision or instruction concerning use of the unit in a safe way and understand the hazards involved.

Children shall not play with the unit.

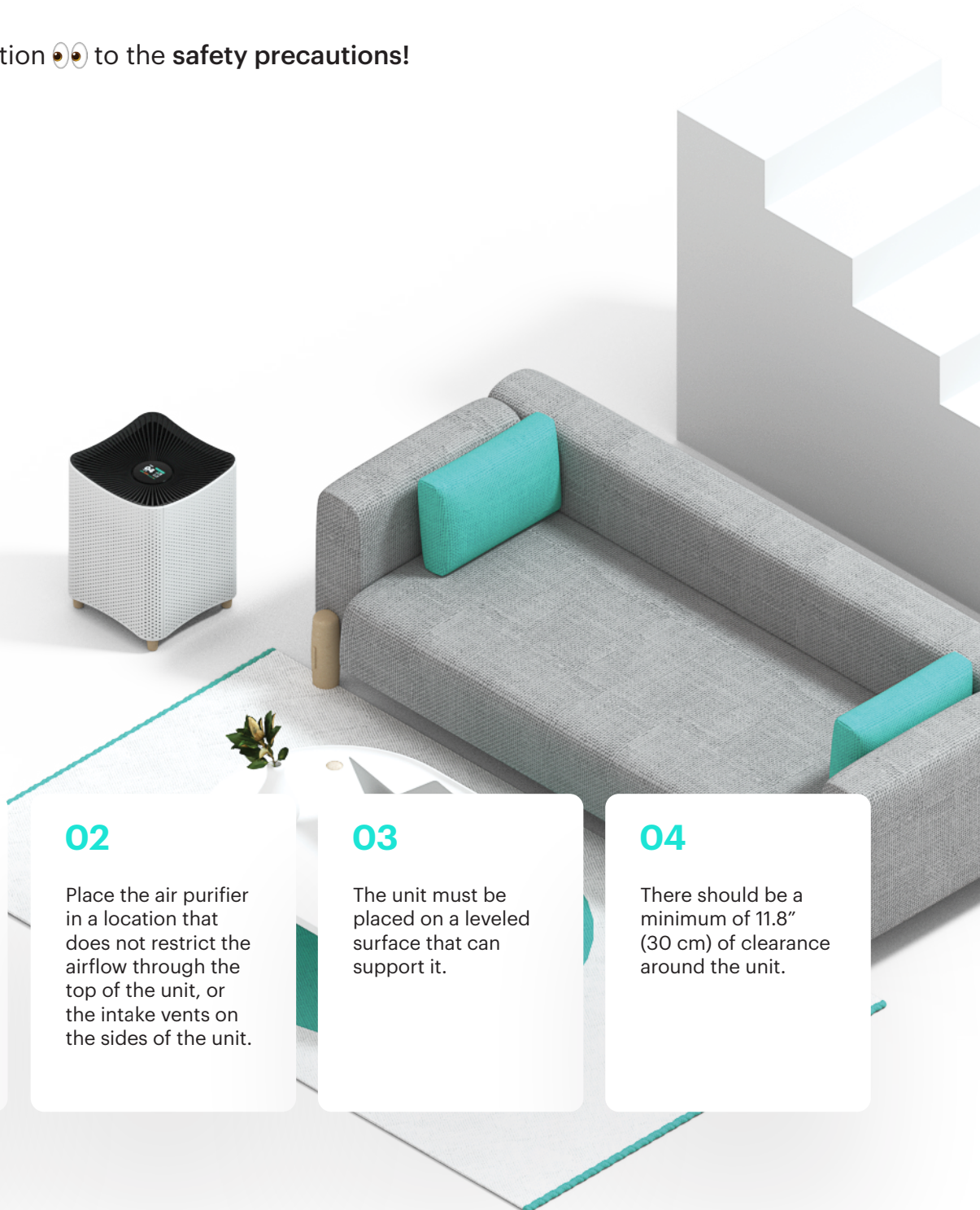
Cleaning and user maintenance shall not be made by children without supervision.

Children under 3 years of age should be kept away from the unit unless continuously supervised. Keep all packaging away from children.

<b>Getting Started</b>	4
<b>Definitions</b>	6
<b>Operating Instructions</b>	8
<b>Air Quality</b>	10
<b>Modes</b>	11
<b>Maintenance and Care</b>	14
<b>Troubleshooting</b>	16

- Read this manual carefully 📖
- Check that **all parts described are included** (each Mila unit comes with a corded plug and the unit itself).
- Pay special attention 👁️👁️ to the **safety precautions!**

## Setting up



### 01

Operate your Mila in an enclosed area. Close all doors, windows, and other openings connecting to the outside of the room.

### 02

Place the air purifier in a location that does not restrict the airflow through the top of the unit, or the intake vents on the sides of the unit.

### 03

The unit must be placed on a leveled surface that can support it.

### 04

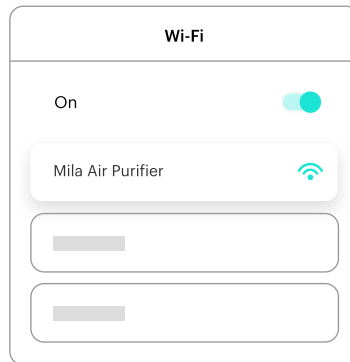
There should be a minimum of 11.8" (30 cm) of clearance around the unit.

## Pairing Mode



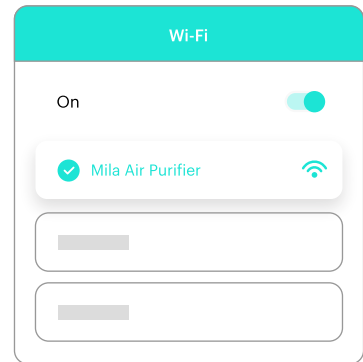
1

Tap and hold the “Mode” button for **5 seconds**.



2

While **Pairing Mode** is active, a WiFi network will emit from the unit called “*Mila Air Purifier*”.



3

Connect to the “*Mila Air Purifier*” network and follow the instructions in your Mila app.

This unit is equipped with a WiFi module, which enables remote control and access to the full functionality of the system via Mila’s smart phone app, available in Android and iOS. Download our “Mila” app and follow the instructions for how to connect it with your unit.

If a unit loses network connectivity, a “Connection Lost” screen will be shown until network connectivity is restored.

Mila supports pairing with a 2.4GHz network.



**Scan me to download the Mila app.**

Terms	Abbreviation	What It Means
Air Quality Index	AQI	<p>An index used globally by government agencies to communicate how polluted the air is. The lower your AQI score, the fresher your air.</p> <p><b>0-50</b> — Lookin' good! 😊 This is the ideal range you want to be in.</p> <p><b>51-100</b> — Not bad, not great. 😐 Air quality in this range is considered moderate.</p> <p><b>100+</b> — Yikes, not good 😞 AQI values above this is considered poor air quality.</p>
Air Changes / Hr	ACH	<p>Refers to how often the room's air will be circulated through Mila's filter every hour. The higher your ACH, the higher your fan speed.</p>
Protection Factor	PF	<p>Indicates the difference in air quality between indoors and outdoors. An internet connection is required.</p>
Mode		<p>Mila operates in two primary modes:</p> <ul style="list-style-type: none"><li><b>(A) Automagic</b> Let Mila auto-adjust to your ideal settings.</li><li><b>(M) Manual</b> Select your fan speed and target AQI.</li></ul>

Terms	Abbreviation	What it Means
<b>Automagic settings</b>		Custom settings you can enable when Mila is in Automagic Mode. Accessible through your Mila app. Read more about the Automagic settings on p. 12.
<b>Service Mode</b>		A temporary state that performs a specific task. An Internet connection is required. Examples of Service Modes include "Calibration," which occurs when starting up your Mila.
<b>Target AQI</b>		Mila calculates your projected AQI based on fan speed and room size.
<b>Current AQI</b>	IAQ	The current indoor air quality. Calculated based on Mila's sensors.
<b>Outdoor AQI</b>	OAQ	The current outdoor air quality. Calculated from one of 6,000 global air quality stations based on your location. An Internet connection is required.



## To turn on your unit ...

The unit will beep and begin operating in **CALIBRATION Mode** before switching to **AUTOMAGIC Mode**.

*NOTE: It can take up to 90 seconds for the sensor to analyze the air quality. Each time the unit is turned on, the AUTOMAGIC Mode is activated automatically.*

**01**

Make sure your Mila filter door is closed.

**02**

Plug in the unit to your power outlet.

**03**

Flip the power switch located on the bottom of the unit.





## Calibration Mode

This mode starts automatically each time the unit boots up or the filter door is removed and replaced.

In this mode, the sensors are calibrating and functionality is disabled until calibration is completed.

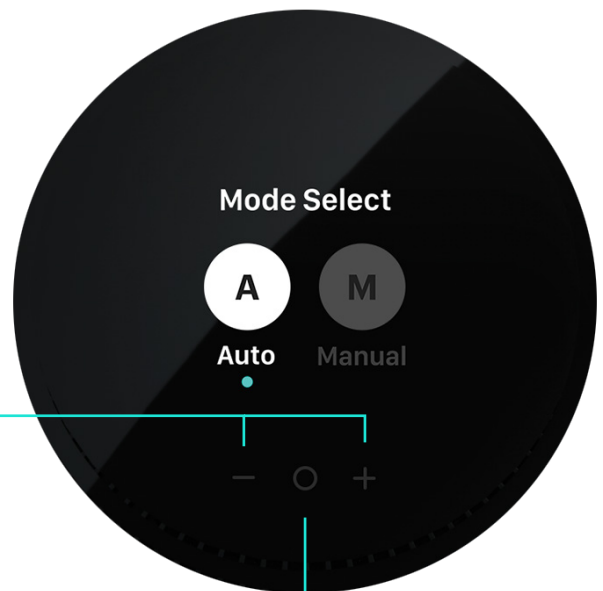
Calibration typically takes 70 seconds to complete and displays a countdown timer for time remaining.

This unit has an air quality sensor that analyzes the air quality. The display will show the air quality in real time. In Automagic Mode, a message bubble gives further information or analysis about the air quality level detected as shown below:

Status Message	AQI	What it means for your air quality
Lookin' good! :)	0 - 50	Good
Not bad, not great :-\	51 - 100	Moderate
Yikes, not good :(	101 - 150	Unhealthy for sensitive groups
	151 - 200	Unhealthy for everyone
	200 +	Health warnings of emergency conditions or hazardous

*NOTE: It may take up to 70 seconds for the sensor to analyze the air quality each time the unit is turned on.*

Very high humidity conditions in the room might produce condensation in the sensors. This could affect the accuracy of the sensor readings.



1

Tap the "Mode" button (o) located at the bottom of the display, between the minus (-) and plus (+) buttons. The screen will change to show the "Mode Selection" screen.

2

Tap the "-" or "+" button to change your selection.

3

Tap the "Mode" button (o) again to confirm your mode selection.

## Automagic Mode

In this mode, the unit will choose the fan speed automatically, based on your preferences, the indoor air quality level, detected pollutants in the room, and the outdoor air quality (this requires an Internet connection and location-sharing). This is the default mode each time you turn on your Mila.



Select **custom Automagic settings** in the Mila app:



### Quiet Mode

Reduce fan speeds to whisper-quiet levels when you're in the room.



### Housekeeping Mode

Let Mila deep-clean your room when no one is around.



### Deep Clean

Give your room a thorough airing out with a 20-minute blast.



### Turndown Service

Activate an hour before bedtime to give your room a deep clean to reduce nighttime allergies.



### Light Sleeper

Snooze in peace and quiet with lights off, lower fan speeds, and controlled fan fluctuations.



### White Noise

Drift off to the calming rhythm of oscillating fans that clean while they soothe.



### Quarantine

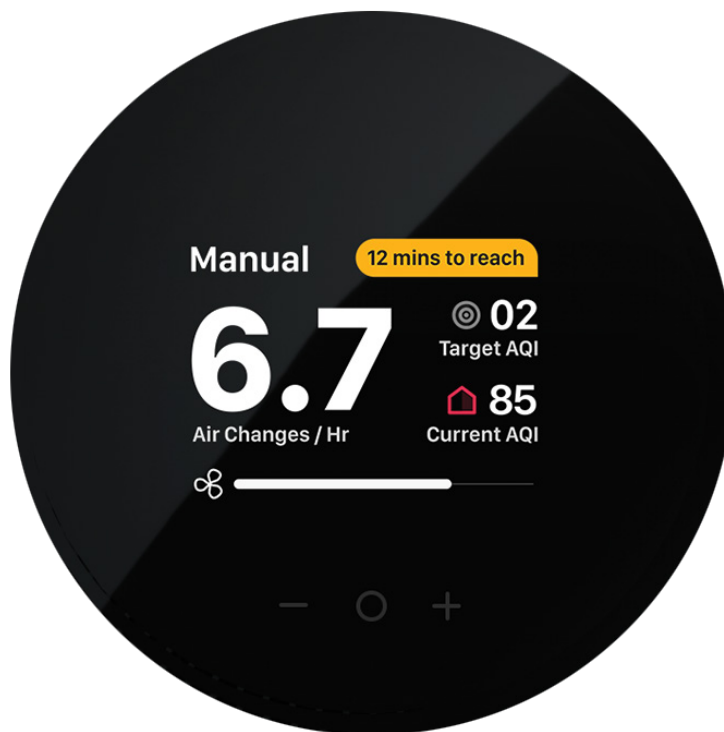
This one's for the clean air freaks. Let Mila do whatever it takes to keep your room 100% particle free.

*NOTE: In Automagic Mode the fan speed cannot be changed manually.*

## Manual Mode

To switch to manual mode follow the next steps.

- 1 Tap the “Mode” button.
- 2 Tap the “+” button to change the selected mode to Manual.
- 3 Tap the “Mode” button again to confirm the selection.



In this mode, the fan speed can be changed manually by touching the minus (-) and plus (+) buttons to increase or decrease fan speed.

Manual Mode begins with the fan stopped (0 RPM) or 0.0 Air Changes / Hr (ACH).

The fan speed will change gradually after a new fan speed is selected.

Each time the fan speed changes, the timer at the top right of the screen will recalculate the estimated time to clean based on the Target AQI shown. This timer will decrease or increase as time passes and the air quality changes.

Each time the fan speed is changed, the value for “Target AQI” will be updated and a new Time to Clean will be calculated.

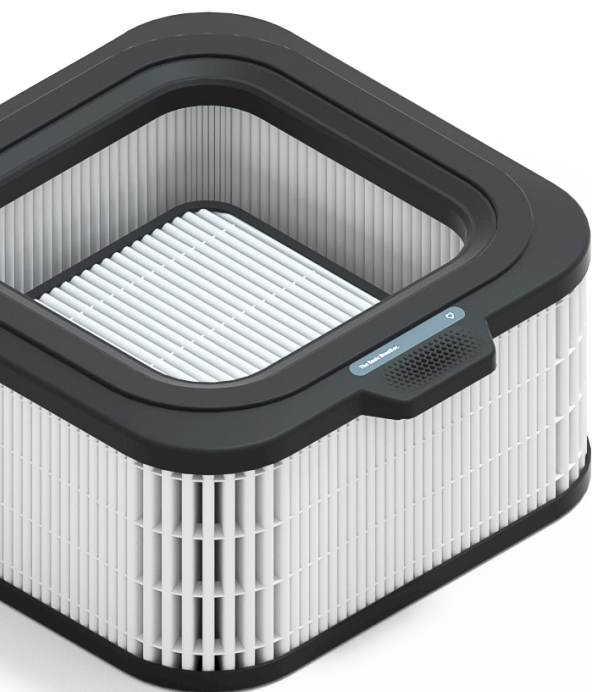
Target AQI is calculated based on your set room size and the estimated ACH.

It’s important to note that at lower AQI levels, it can take longer to clean. Additionally, if your Indoor AQI increases, so will your Time to Clean.

This screen also presents the “Air Changes / Hr” and the indoor “Current AQI”.

## Changing Filters

Filters should be replaced **every 6-9 months** depending on use. Replacing a filter can be achieved while the unit is ON or OFF.



1

Remove the filter door located at the front of the unit by pulling the bottom half of the door panel. The fan will stop and the screen will change to notify you that the filter door is open.

2

Remove the dirty filter and insert a fresh filter.

3

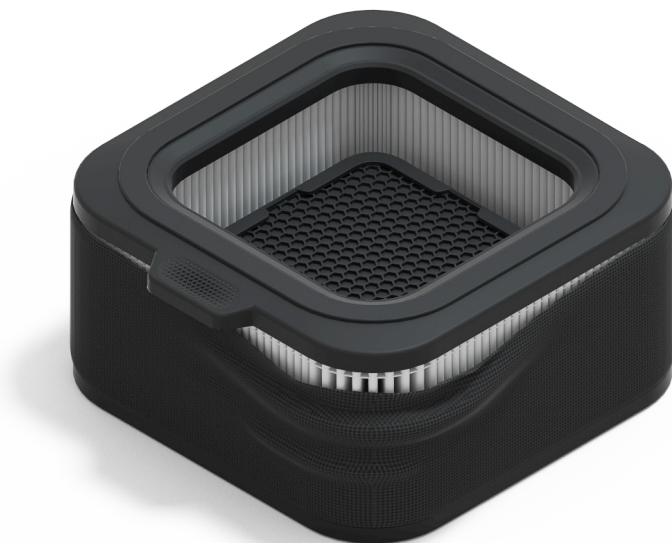
Close the filter door by sliding the top first and pushing the magnets on the bottom of the door toward the unit.

4

The unit will recalibrate its sensors after detecting that the filter door has been closed.

## Mila Sock care

Wash the Mila Sock (pre-filter) by hand in cold/warm water and let dry completely before fitting it back on your Mila filter.





## Cleaning

Unplug the unit before cleaning to prevent shock or fire hazards.

The plastic parts of the unit may be cleaned with an oil-free dry cloth or by using a vacuum cleaner with a soft brush.

Never use abrasive, harsh cleaners or wax when cleaning the unit.

*NOTE: The multi-layer filter cannot be washed. Please dispose in accordance with your local laws and replace as needed.*

## Storage

If you are not planning to use the unit for a long time, cover it with plastic or return it to its carton. Filters should be kept sealed in their original packaging until ready for use.

## Disposal

The European directive 2012 / 19 / CE on Waste Electrical and Electronic Equipment (WEEE), requires that old household electrical units must not be disposed in the normal unsorted municipal waste stream. Old units must be collected separately in order to optimize the recovery and recycling of the materials they contain and reduce the impact on human health and the environment. The crossed out “wheeled bin” symbol on the product reminds you of your obligation, that when you dispose of the unit it must be separately collected. Consumers should contact their local authority or retailer for information concerning the correct disposal of their old unit.



Issue	Solution
<b>My air purifier won't turn on.</b>	<p>Check if the power plug is disconnected. Push the power plug firmly into the electrical outlet.</p> <p>Check if the house fuse is blown or the circuit breaker tripped. Replace the fuse with a time delay type or reset the circuit breaker.</p>
<b>The fan isn't running.</b>	<p>Make sure your filter is installed correctly and the filter door is closed properly. Restart Mila and wait for "Calibration Mode" to complete (this usually takes around 70 seconds).</p> <p>Mila will automatically run in "Automagic" mode at startup. Switch to "Manual" mode to set your own target AQI and fan speed.</p>
<b>My air quality isn't improving.</b>	<p>Check if any windows or doors are open. Close all doors, windows and other openings connecting to the outside of the room.</p>
<b>The unit is very loud.</b>	<p>Make sure there are no obstacles near the unit and that it has a minimum of 12" (30 cm) of clearance around it for optimal operation.</p>

Issue	Solution
<p><b>The fan speed doesn't change after selecting a new fan speed.</b></p>	<p>Please make sure you've selected Manual Mode before attempting to change the fan speed.</p> <p>The fan speed will decrease or increase gradually—this is normal. If it does not change after a prolonged period of time after the input, then please reach out to Mila Customer Care for support.</p>
<p><b>My unit smells odd.</b></p>	<p>The first time you use the purifier, you might perceive a plastic or paint smell. This is normal, but it should disappear after a couple days. If the smell persists or if you sense a burning smell, please disconnect the purifier and reach out to Mila Customer Care for support.</p>
<p><b>The app isn't working properly or I'm unable to pair the unit with the app.</b></p>	<p>Please reach out to Mila Customer Care for support on issues related to the app.</p>

Issue	Solution
<b>My display screen says "Connection Lost."</b>	<p>This screen indicates the unit lost its network connectivity.</p> <p>Make sure the unit is within range of a stable 2.4GHz WiFi network.</p> <p>Pair the unit with the Mila mobile app.</p> <p>Turn OFF the unit by flicking the power switch on the bottom of your Mila. Wait 20 seconds and turn ON the unit.</p> <p>Reboot your router.</p>
<b>My Mila just rebooted itself.</b>	<p>Your Mila may reboot itself from time to time for a memory refresh (similar to how you might reset a router). Fear not, all your data is still there!</p>

For help resolving any other issues, please contact Mila Customer Care (support@milacares.com). We'd be happy to help.



**Mila**

Love is in  
the air.